

MEM 996

NARROW VEIN BOLTER



FEATURES

- Mechanical rock drilling and rock bolt insertion
- Ability to install a wide range of rock support: mechanical bolts, rebar, friction bolts and screen
- Single setup, one pass system
- Provides scaling deck at optimum height
- Hydraulic Rock Drilling
- Highly Mobile
- Provides full coverage in varied heading conditions
- Remote Driving System
- Remote control drilling and bolting functions

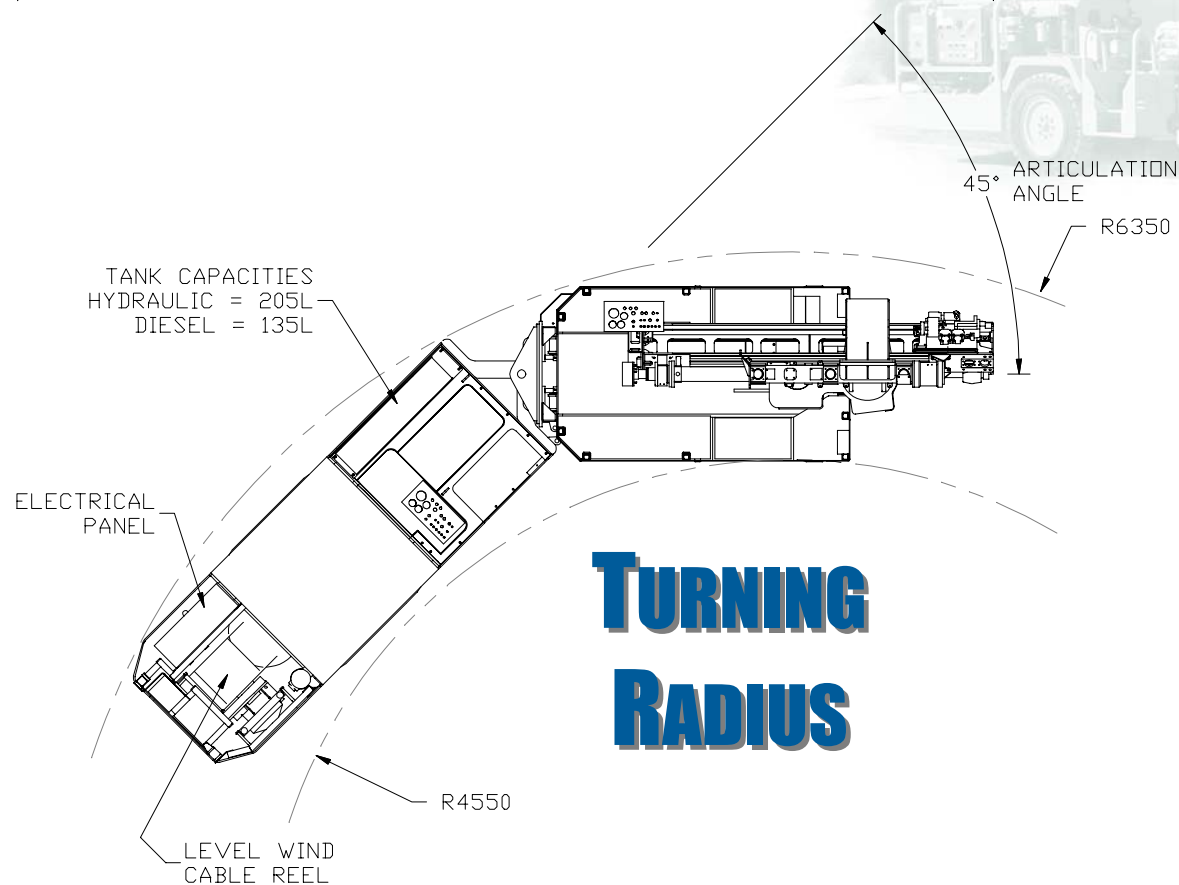
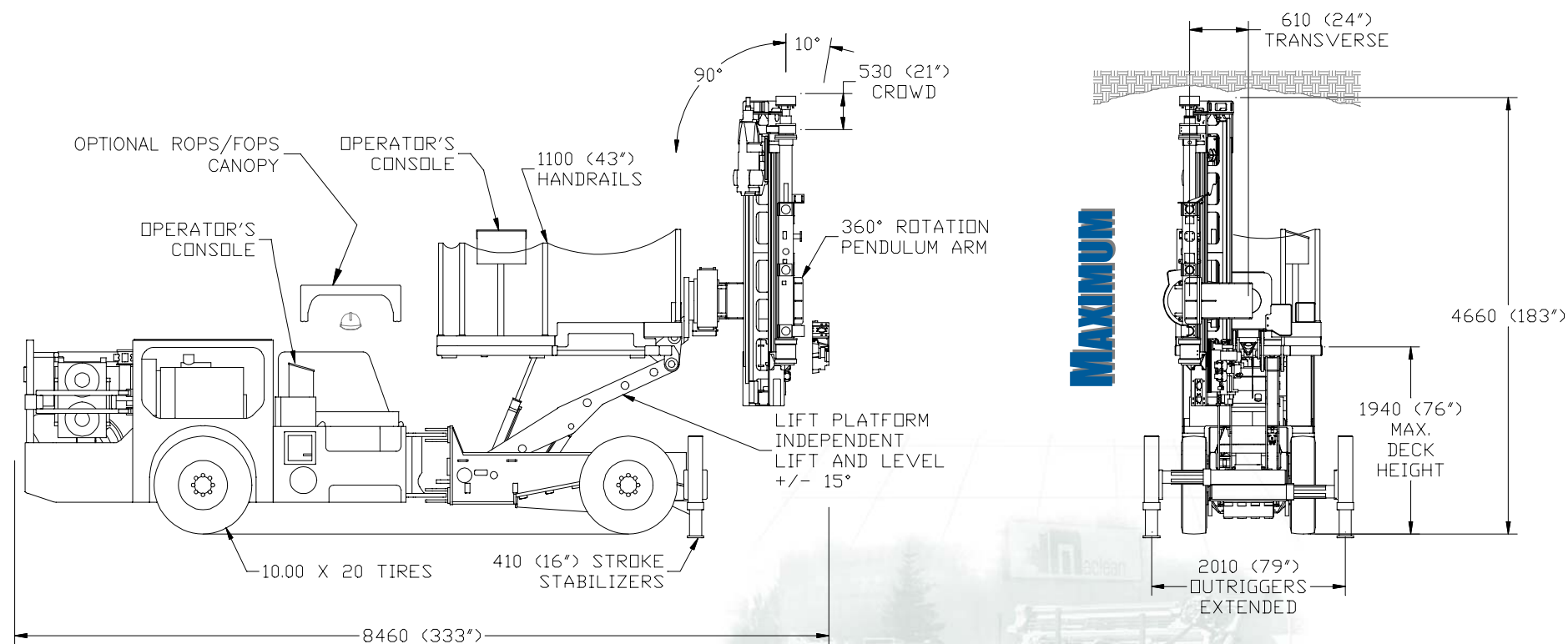
BENEFITS

- All operations carried out from under unsupported ground.
- Permits drilling and bolt insertion from a safe working environment
- Significant productivity savings (one man operation for bolting and meshing)
- Accelerates development cycle
- Eliminates safety hazards of hand held drilling
- Multiple types of ground support hardware can be installed without loss of productivity
- Sequential bolting ring set-ups can be made from the drilling and bolting platform
- Provides quality rock bolt installation

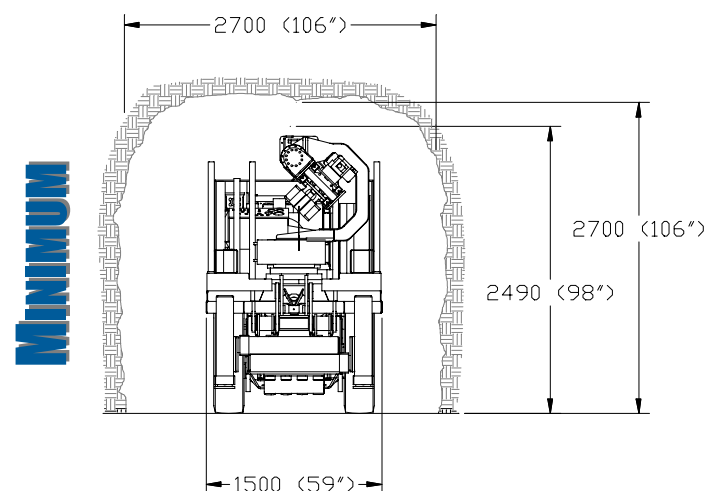
APPLICATIONS

- Development drifts and narrow vein production stopes - 3m to 4.5m high X 3m wide
- Designed to operate in narrow mine openings
- Development drift profiles can be conventional or shanty style
- Rockbolt installation from invert to invert
- Suitable in remote / captive applications
- Installation of screen or wire mesh
- Installation of mechanical rockbolts, resin rebar, Dywidag®, Split Set®, Swellex® and cable bolts

NARROW VEIN BOLTER



DRIFT COVERAGE



FACTORY STANDARDS

❑ CARRIER MODEL - Series 200

Deutz BF4M-1013C engine 115 kW
Clark-Hurth 28000 Series powershift transmission

New Holland D45N axles

- Fully enclosed wet disc brakes
- Braking System to CAN/CSA-M424.3-M90 Standard
- 4 hydraulically actuated service brakes
- 4 spring applied park/secondary brakes

❑ DRILLING / BOLTING SYSTEM

Furukawa HD90 Rock Drill
Drill Feed Pendulum Positioning System
Integrated Safety Interlocks
Hydraulic Drill Centralizer
Auto Bolt Centralizer
Remote Drive System

❑ ELECTRICAL

Designed to Canadian Electrical Code
CSA approved
Wiring harness designed for underground environment
Control System is fully programmable on serial bus platform

❑ WORKING PLATFORM

Lift Platform designed to CAN3.B354.2.98 standard
Deck area = 1500 x 2100 mm
Operator Controlled Levelling System for work platform

FACTORY OPTIONS

Engine options to customer specifications
ISO/FOPS canopy
Combination Split Set® Driver / Bolt Torquer
Hydraulic/Electrical Swellex® Options
Panel voltages to customer specifications
Extendable Feed

* All options must be pre-approved by MEMCO

Note: The manufacturer reserves the right to change the specifications or design of this machine at any time without notice.

Servicing the Mining Industry for over 25 years



Inquiries are invited to MacLean Engineering at

HEAD OFFICE

1000 Raglan Street
Collingwood, Ontario
CANADA
L9Y 3Z1

Telephone: 1-866-856-3626 *Toll Free*
+1-705-445-5707 *International*

Fax: (705) 445-3214

e-mail: sales@macleanengineering.com

Web: www.macleanengineering.com

YOUR LOCAL REPRESENTATIVE:

SERVICE CENTRE

1154 Webbwood Drive
Sudbury, Ontario
CANADA
P3C 3B7

Telephone: (705) 670-8014

Fax: (705) 670-8176

e-mail: service@macleanengineering.com