

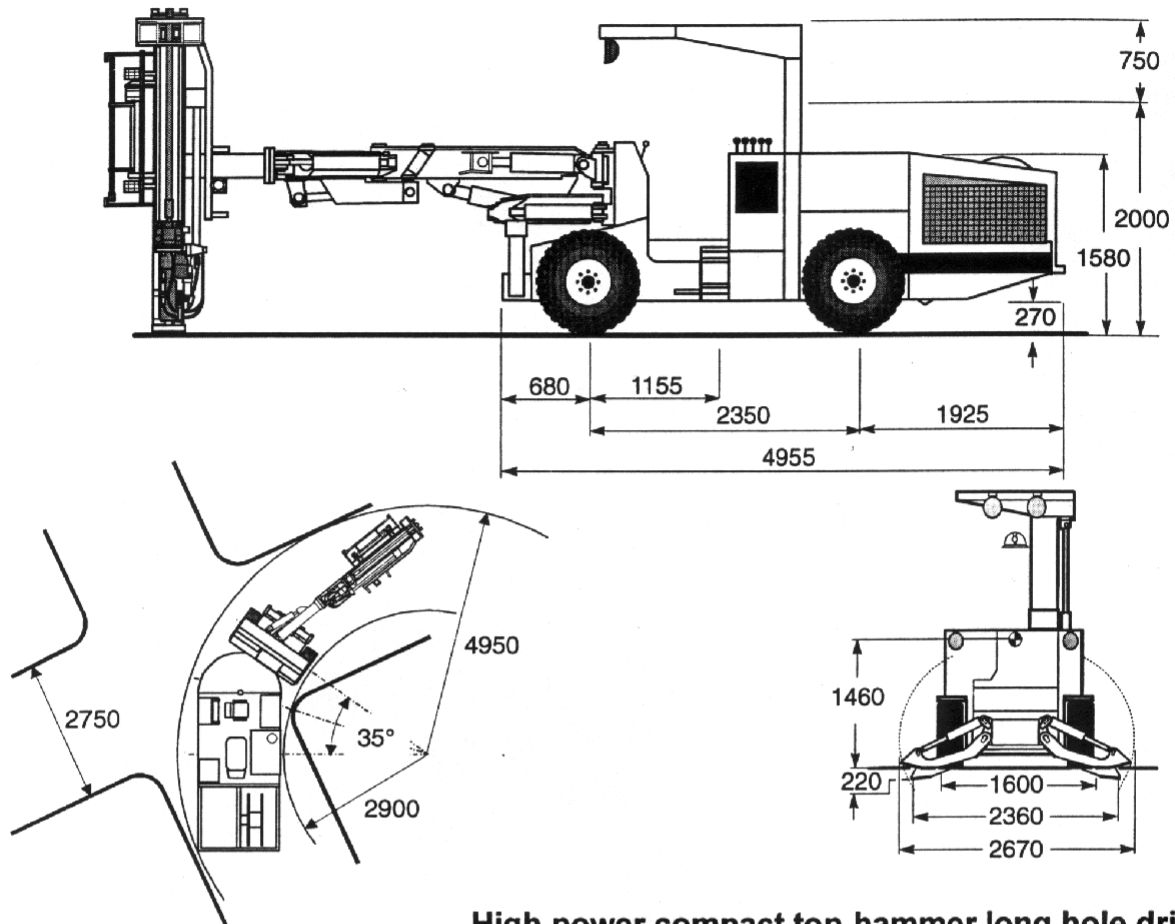
TAMROCK**MERCURY 1LC10
D4 - E 50**

7 - 200 S - C

1999 - 10 - 13

1/2

DOC 010



**High power compact top-hammer long hole drill,
four wheel drive articulated hydraulic jumbo,
for fully mechanized production from medium size drifts.
Compatible to 10 rods carousel.**

Rock drill	<i>Standard</i>	<i>Alternative</i>
-------------------	-----------------	--------------------

Model.....	Hydrastar 300 L	Hydrastar 350 L
Standard male shank.....	R 38 - T 38	R 38 - T 38
Weight	145 kg	155 kg
Impact frequency.....	40-55 Hz	40-60 Hz
Percussion pressure...	160-180 bar	160-180 bar
Impact power.....	12-16 kW	14-18 kW

Drill feed

Model.....	LHF 2000
Steel length	4 to 6 ft
Drill steel	ø 39

Extension Rod Handler

Model.....	E.R.H.C. 10
Capacity	9+1 extension MF rods

Hydraulic control panel

Model.....	I.C.B.L.
Providing	auto smooth collaring precise anti-jamming
	only one control lever for thrust/percussion (full & half)

Boom

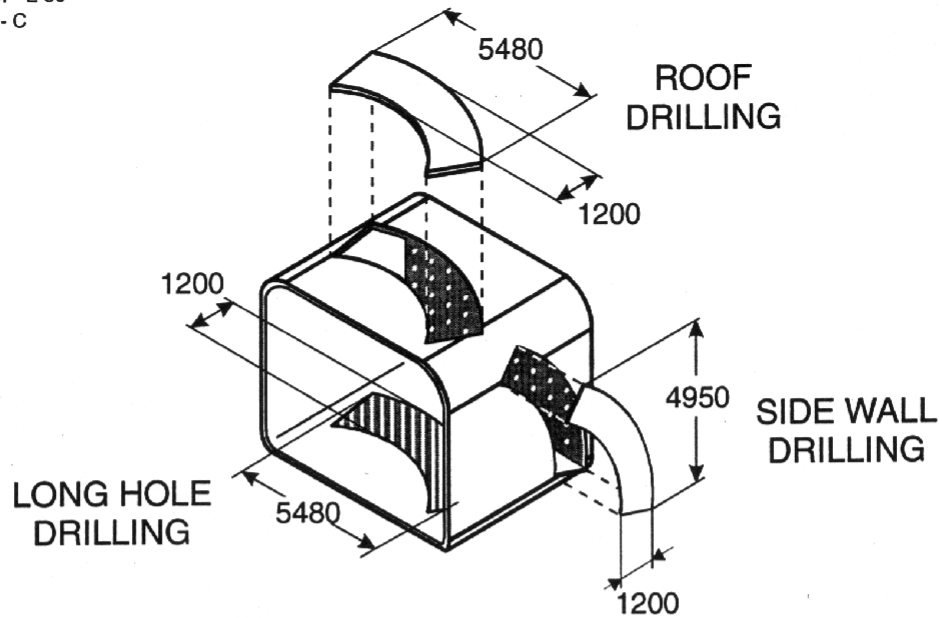
Model	B 26 LC
Type	Parallel holding, multi-directional
Weight (with hoses)	1900 kg
Feed roll-over.....	360°
Boom extension	1200 mm
Feed extension	1200 mm

Power Pack	<i>Standard</i>	<i>Alternative</i>
		(for Hydrastar 350 L)

Model.....	P.P. 37 kW/3.2 Q	P.P. 45 kW/3.6 Q
Electrical motor	37 kW (50 hp)	45 kW (60 hp)
Hydraulic pump.....	fixed displacement, radial piston	

Tramming possibilities

Tramming speed.....	up to 6.5 km/h
Maximum operating grade	up to 35%
Weight, approximate	9600 kg



Carrier Mercury

Service capacities

Fuel tank.....60 litre

Hydraulic tank.....200 litre

Engine

Diesel4-cyl. Deutz F4L912W

Max. rating at 2300 rpm55 hp (40 kW)

Cooling system..... Air-cooled

Exhaust treatment ECS purifier

Hydrostatic Transmission

One Pump Variable displacement
 Axial piston, 0-75 cm³/rev

Four Wheel-motorRadial piston

Oscillation

Rear..... ± 6°

Wheels

Tyres.....10.00 x 15

Steering1 hydraulic cylinder

Steering control Stick steering

Articulation angle.....35° either side from center line

Service Brake..... Hydrostatic transmission

Parking and Emergency Brakes

Type Hydraulic oil immersed
 multiple disc brakes on each wheel

Actuation Emergency button
 Spring applied, hydraulically released type

Stabilizers

Front..... 2 outriggers S.F.S.O. 27

Rear..... 2 jacks S.J. 2

Oil Cooler

TypeO.C. 25, water-actuated counterflow

Cooling capacity 25 kW

Protective telescopic canopy

Model..... T.C. 1

Lowering capability..... 750 mm

Rock Drill Lubrication

Compressor.....C.T. 2, piston

Volume / Pressure.....800 l/min - 4 bar

Motor Electric - 7.5 hp (5.5 kW)

Water Flushing

Water booster pump..... W.B.P. 2, centrifugal

Volume/Pressure..... 4000 l/h - 15 bar

Motor Electric - 5.5 hp (4 kW)

Electrical system

High/Low voltage.....Separate cabinets

Voltage *Standard* 380 - 660 V
Alternative 1000 V

Frequency 50 or 60 Hz

Cable Reel..... C.R.M.

Capacity100 m of cable 32 mm O.D.

Lighting

Working light .. Two 24 V x 150 W halogen, W.L. 2.150

Tramming light Three 24 V x 70 W, T.L. 3.70

Tail light One 24 V x 15 W red light

Optional equipment

ANSUL Fire Suppression System LTA 101-30 (6 jets).

Spare wheel.

Electric cable.

Ground fault detector (not applicable to 1000 V).

Fume diluter.

Safety cabin.

Cuttings collector.

Front stinger.

Air & water flushing for down holes drilling.

Electronic inclinometers.

Automatic thread greasing system.